



19 Betjeman Close
Pinner, HA5 5SA

£295,000



19 Betjeman Close

Pinner, HA5 5SA

A BEAUTIFULLY APPOINTED 2 BEDROOM GROUND FLOOR RETIREMENT APARTMENT quietly situated to the rear of this sought after Cul de Sac development. This warm & charming property is decorated in a light modern style & benefits from a superb fitted kitchen with integrated appliances and a re designed bathroom suite boasting a modern 'walk in shower'.

Generous living room with door to PRIVATE SOUTH FACING PATIO and Landscaped Communal Gardens, Double Glazing, Electric Heating, Part time Resident Warden, Communal Laundry Room, Intercom and Emergency Pull Cords in all rooms. The apartment backs on to the delightful landscaped gardens and benefits from resident & visitor parking.

Available to persons over 60 years of age only.

Communal Front Door

Communal Hall Way

Own Front Door

Entrance Hall

Living Room

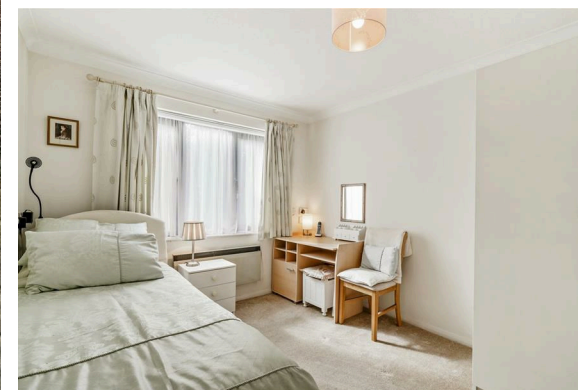
Kitchen

Bedroom One

Bedroom Two

Bathroom

Outside





Private Patio Area

Landscaped Communal Gardens

Communal Laundry Room

Resident & Visitor Parking

Resident Warden

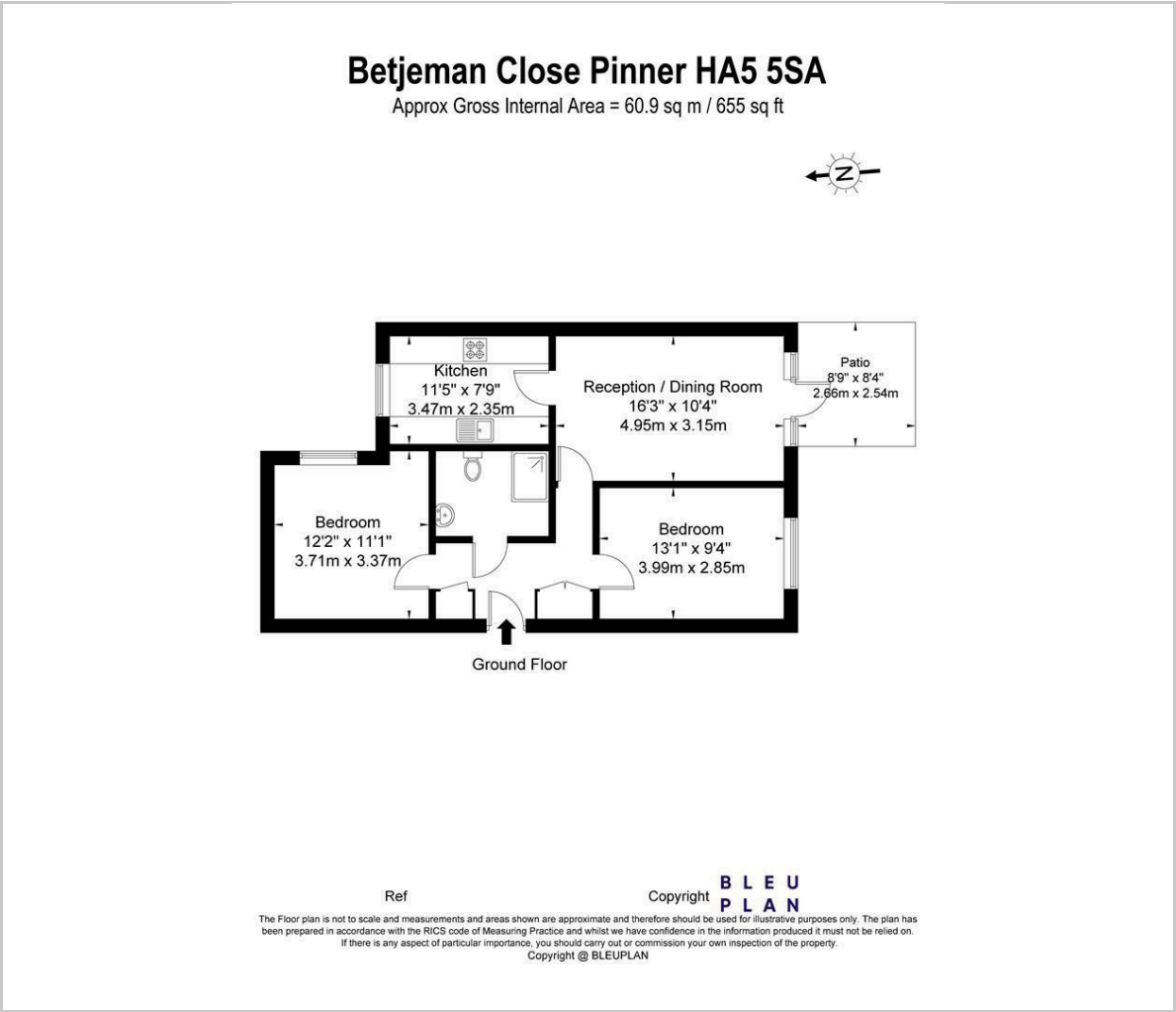
Council Tax Band C

Service Charge £3,220.78 pa

Ground Rent £150 pa



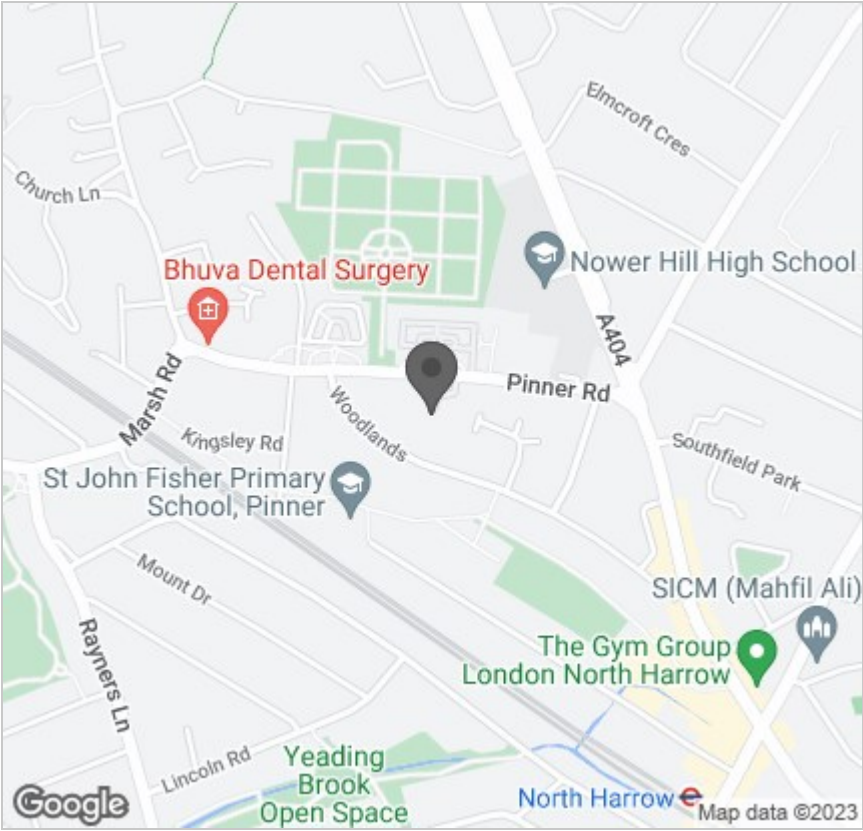
Floor Plan



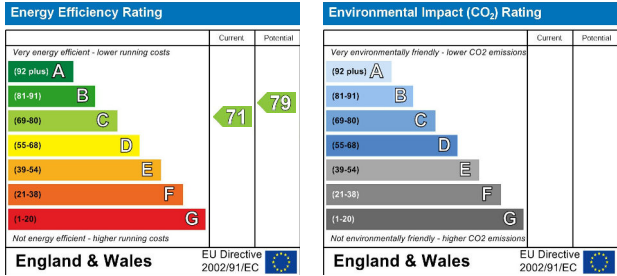
Viewing

Please contact our Harrow on the Hill Office on 020 8422 3333 if you wish to arrange a viewing appointment for this property or require further information.

Area Map



Energy Efficiency Graph



These particulars, whilst believed to be accurate are set out as a general outline only for guidance and do not constitute any part of an offer or contract. Intending purchasers should not rely on them as statements of representation of fact, but must satisfy themselves by inspection or otherwise as to their accuracy. No person in this firms employment has the authority to make or give any representation or warranty in respect of the property.

33-35 High Street, Harrow On The Hill, Harrow, Middlesex, HA1 3HT
Tel: 020 8422 3333 Email: enquiries@wilson-hawkins.co.uk www.wilson-hawkins.co.uk