



23 Betjeman Close

Pinner, HA5 5SA

£169,950



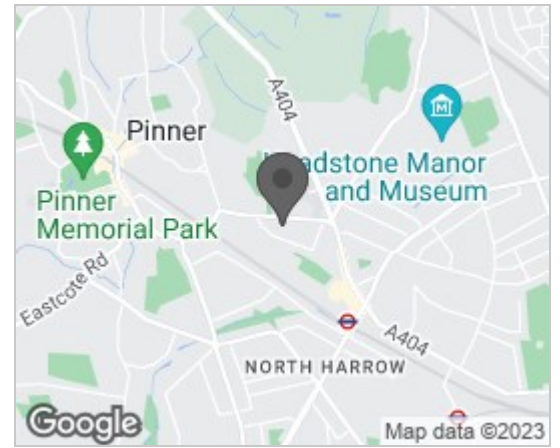
A One Bedroom First Floor Retirement Flat well set in this sought after development with attractive communal gardens and Part time resident warden. Available to persons over 60 years of age only.

Benefits include good sized accommodation, double glazed windows, new 99 year Lease, new electric radiators, re decorated throughout, new carpets, resident & visitor parking and communal laundry room. Transport links at both Pinner and North Harrow are accessible as are attendant shopping facilities. No Upper Chain.

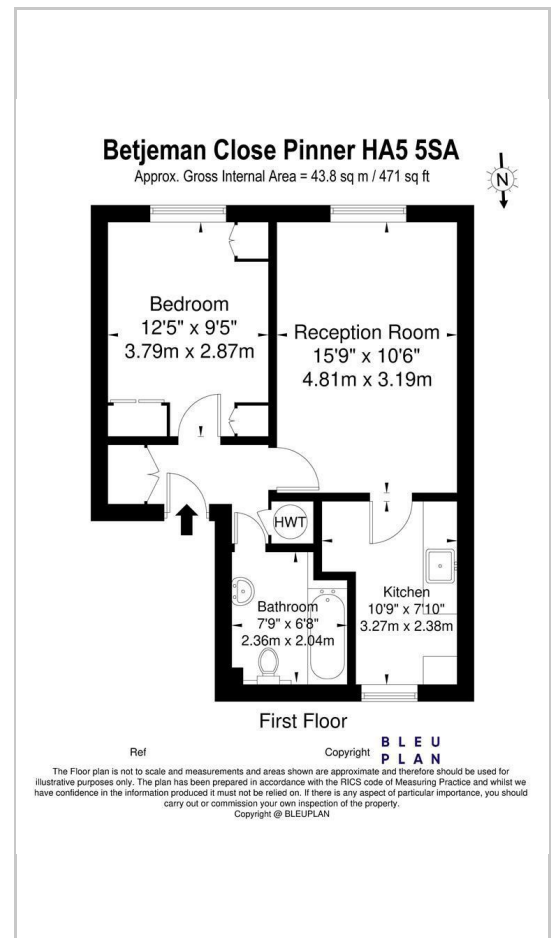


- Communal Front Door
- Stairs with stair lift to First Floor
- Own Front Door
- Entrance Hall
- Lounge
- Kitchen
- Bedroom
- Bathroom
- Outside
- Landscaped Communal Gardens
- Resident & Visitor Parking
- Resident Warden
- Communal Laundry Room
- New 99 year lease upon completion
- Service Charge - £2056.89 pa
- Ground Rent - £150 pa
- Council Tax Band C

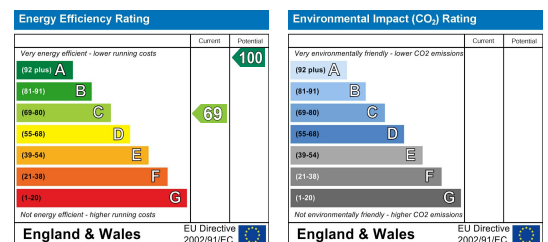
Area Map



Floor Plans



Energy Efficiency Graph



These particulars, whilst believed to be accurate are set out as a general outline only for guidance and do not constitute any part of an offer or contract. Intending purchasers should not rely on them as statements of representation of fact, but must satisfy themselves by inspection or otherwise as to their accuracy. No person in this firm's employment has the authority to make or give any representation or warranty in respect of the property.