



16 Betjeman Close

Pinner, HA5 5SA

£350,000



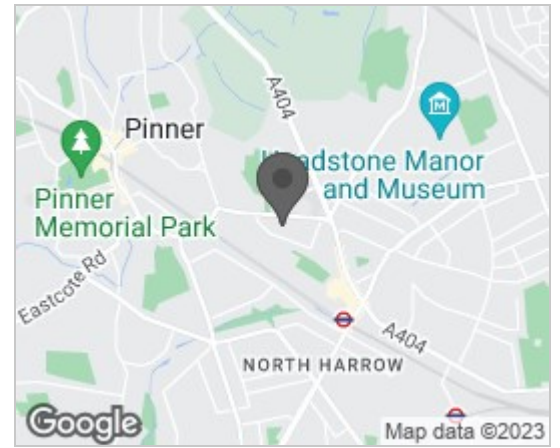
A spacious 2 DOUBLE BEDROOM, 2 BATHROOM, MID TERRACE RETIREMENT PROPERTY with a bathroom on each floor. The property is well situated in this sought after DEVELOPMENT and is offered for sale with vacant possession. GENEROUS FITTED KITCHEN, DOUBLE GLAZING, ELECTRIC STORAGE HEATERS, SPACIOUS LOUNGE/DINING ROOM with door to PRIVATE PATIO. Warden intercom and emergency pull cords in each room. The development has a resident warden and boasts a communal laundry room and landscaped communal gardens. Resident parking. Quiet Cul De Sac location, Over 60'S ONLY. Located just a short distance from Pinner & North Harrow Metropolitan Line tube stations with their attendant shopping facilities, restaurants & coffee houses.



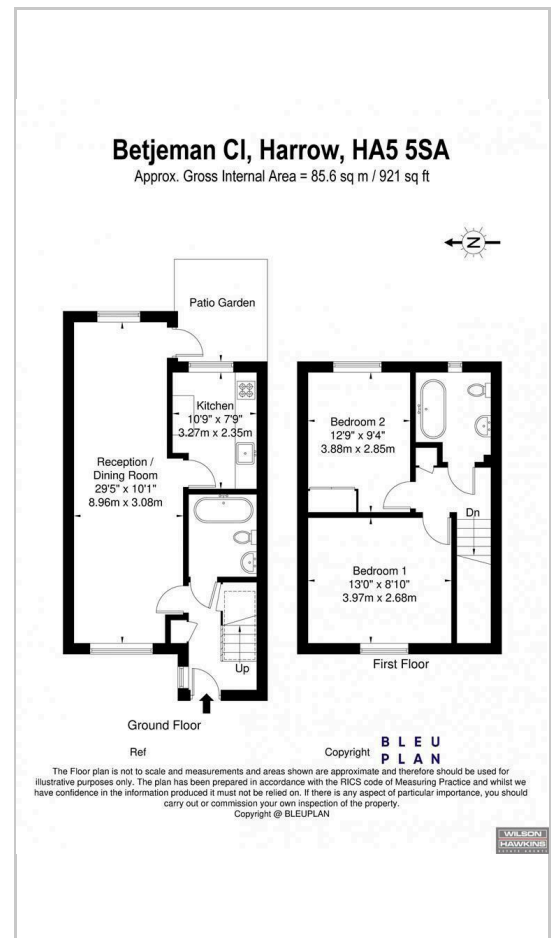
- Own Front Door
- Entrance Hall
- Lounge/Dining Room
- Kitchen
- Downstairs Bathroom
- Stairs to First Floor
- Landing
- Bedroom One (rear aspect)
- Bedroom Two (Front aspect)
- First Floor Bathroom
- Private Patio Garden
- Communal Gardens
- Communal Laundry Room
- Resident & Guest Parking

Additional Information
 Service Charge - £3086.56 pa
 Ground Rent - £150 pa
 Council Tax - Band D

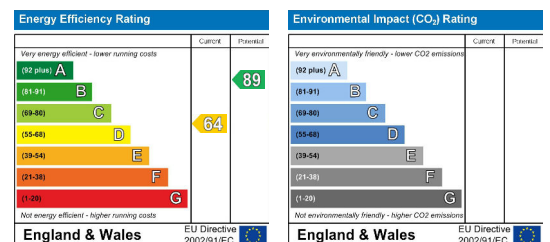
Area Map



Floor Plans



Energy Efficiency Graph



These particulars, whilst believed to be accurate are set out as a general outline only for guidance and do not constitute any part of an offer or contract. Intending purchasers should not rely on them as statements of representation of fact, but must satisfy themselves by inspection or otherwise as to their accuracy. No person in this firm's employment has the authority to make or give any representation or warranty in respect of the property.