



13 Betjeman Close

Pinner, HA5 5SA

Asking Price £249,950



A SPACIOUS 2 BEDROOM GROUND FLOOR RETIREMENT APARTMENT with door from lounge to PRIVATE SUN TERRACE and Landscaped Communal Gardens, quietly situated in the far corner of this sought after development. The accommodation comprises a separate fitted kitchen, refitted shower room, double glazing, electric heating, emergency warden intercom and pull cords in all rooms. The property is well decorated and presented throughout and further benefits from landscaped communal gardens, resident parking, communal laundry room and on site warden. Available to persons over 60 years of age only.



- Communal Door
- Lobby/Hallway
- Own Front Door
- Entrance Hall
- Lounge
- Kitchen
- Bedroom One
- Bedroom Two
- Bathroom

Outside

Private terrace and extensive landscaped communal gardens.
Resident & visitor parking. Communal laundry room.

Lease/Service Charge Details

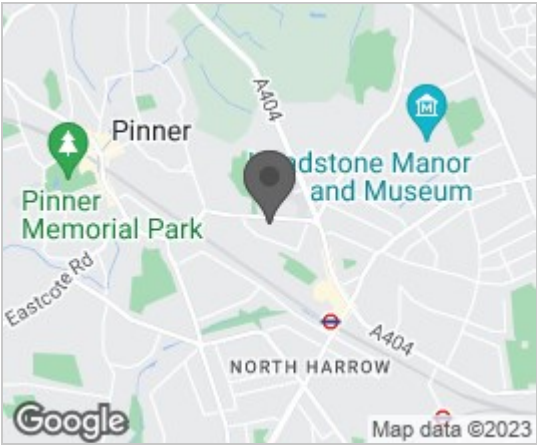
We have been advised the ground rent is £150 Per Annum

We have been advised the service charge is £2868.65 Per Annum

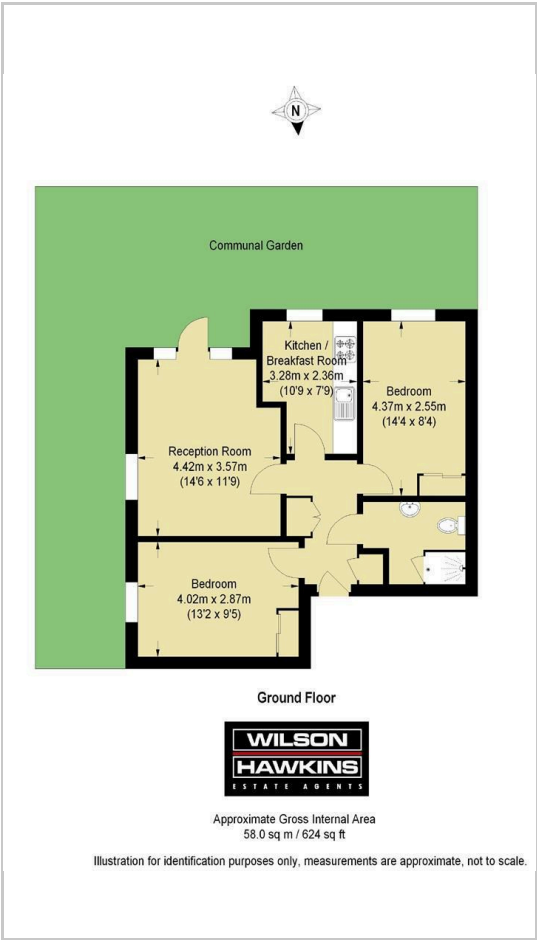
New Lease of 99 years upon completion.

Council Tax Band C £1586

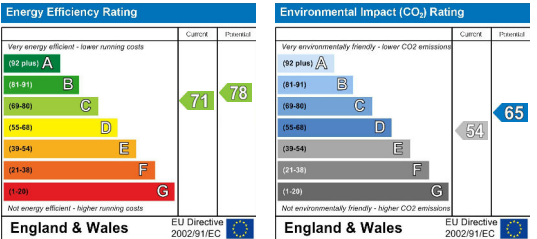
Area Map



Floor Plans



Energy Efficiency Graph



These particulars, whilst believed to be accurate are set out as a general outline only for guidance and do not constitute any part of an offer or contract. Intending purchasers should not rely on them as statements of representation of fact, but must satisfy themselves by inspection or otherwise as to their accuracy. No person in this firms employment has the authority to make or give any representation or warranty in respect of the property.