



3 Lanfranc Court

Greenford Road Harrow, HA1 3QE

£269,995



A Modern One DOUBLE bedroom first floor apartment situated in this GATED development just off the Greenford Road. The property has undergone a programme of refurbishment which includes a NEW KITCHEN and BATHROOM, NEWLY FITTED CARPETS and new double glazing throughout. Benefits include resident parking, garage, communal gardens plus a 940+ year lease. Perfectly located for the Piccadilly (Sudbury Hill) as well as Chiltern Rail (Sudbury & Harrow) stations which are both within a couple of minutes walk. The property is being sold with no upper chain.



Communal front door

Communal hall
Stairs to all floors

Own front door

Entrance hall

Lounge

Kitchen

Bedroom

Bathroom

Outside
Electric gate, resident parking

Garage
Up and over door

Further information
Lease- We have been advised the number of years remaining on the lease is 945 years(999 years from 24 June 1967)

Service Charge- We have been advised the service charge is approximately £405 per quarter

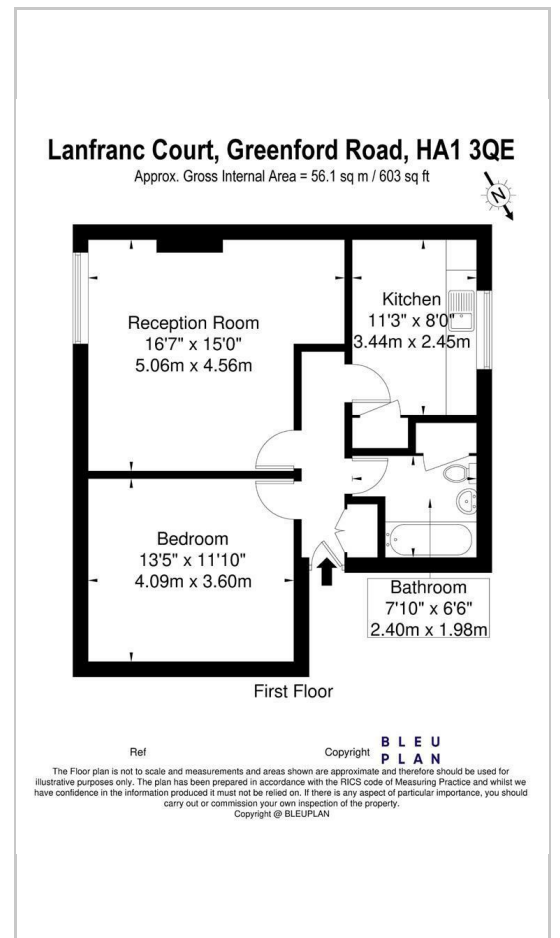
Ground Rent- Peppercorn ground rent

Council tax £1854.79 per year

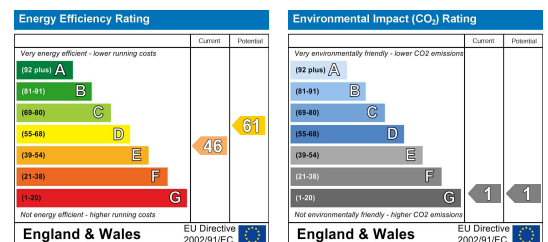
Area Map



Floor Plans



Energy Efficiency Graph



These particulars, whilst believed to be accurate are set out as a general outline only for guidance and do not constitute any part of an offer or contract. Intending purchasers should not rely on them as statements of representation of fact, but must satisfy themselves by inspection or otherwise as to their accuracy. No person in this firm's employment has the authority to make or give any representation or warranty in respect of the property.