



1 Lychgate Manor

Roxborough Park Harrow On The Hill, HA1 3YL

£439,950



A TWO BEDROOM, TWO BATHROOM raised ground floor Apartment favourably positioned in this sought after development on the Western slopes of The Hill and lying within 5-10 minutes' walking distance to Harrow Town Centre with it excellent range of shopping facilities and transport links.

18'3' x 12'10 lounge with private balcony, remote controlled gated access with secure allocated parking, pedestrian entry gate with video entry-phone, double glazing, gas fired central heating. 990 Year Lease plus Share of Freehold. Scope to improve.



Communal entrance

Communal hallway

Own front door

Entrance hallway

Lounge

Door to balcony.

Kitchen

Bedroom One

En suite

Bedroom Two

Family bathroom

Outside

Allocated resident parking, visitors parking

Further information

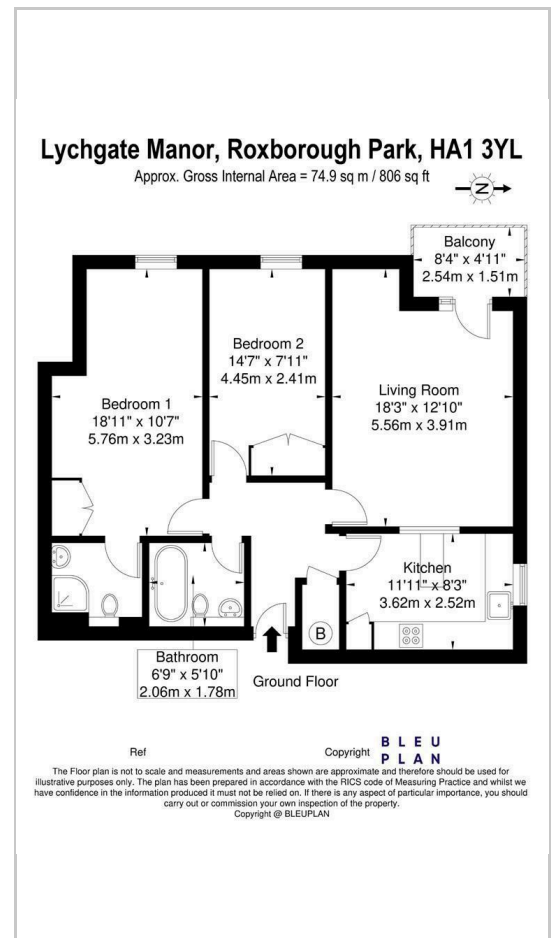
Lease- Share of freehold interest with long lease in excess of 990 years.

Service Charge- We have been advised that the service charge is £2750 per annum

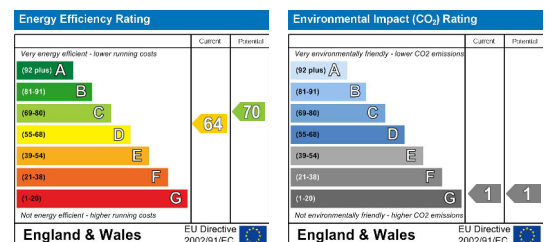
Area Map



Floor Plans



Energy Efficiency Graph



These particulars, whilst believed to be accurate are set out as a general outline only for guidance and do not constitute any part of an offer or contract. Intending purchasers should not rely on them as statements of representation of fact, but must satisfy themselves by inspection or otherwise as to their accuracy. No person in this firm's employment has the authority to make or give any representation or warranty in respect of the property.

33-35 High Street, Harrow On The Hill, Harrow, Middlesex, HA1 3HT

Tel: 020 8422 3333 Email: enquiries@wilson-hawkins.co.uk www.wilson-hawkins.co.uk